



Pushing Performance
Since 1945

Han-INOX® 16B-HSE-M32 f.DL

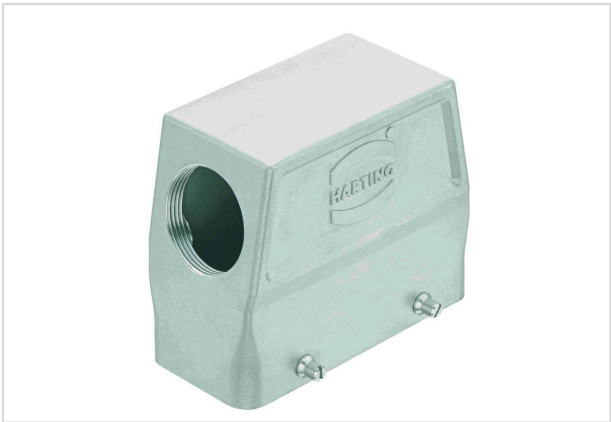


Image is for illustration purposes only. Please refer to product description.

Part number	19 44 016 0527
Specification	Han-INOX® 16B-HSE-M32 f.DL

Identification

Category	Hoods/Housings
Series of hoods/housings	Han-INOX®
Type of hood/housing	Hood

Version

Size	16 B
Version	Side entry
Cable entry	1x M32
Locking type	Double locking lever
Field of application	Hoods/housings for harsh environments

Technical characteristics

Limiting temperature	-40 ... +125 °C
Note on the limiting temperature	For use as a connector according to IEC 61984.
Degree of protection acc. to IEC 60529	IP65
Type rating acc. to UL 50 / UL 50E	4
	4X
	12

Material properties

Material (hood/housing)	Stainless steel
Surface (hood/housing)	Uncoated
Colour (hood/housing)	Unpainted
RoHS	compliant



Pushing Performance
Since 1945

Material properties

ELV status	compliant
China RoHS	e
REACH Annex XVII substances	Not contained
REACH ANNEX XIV substances	Not contained
REACH SVHC substances	Not contained
California Proposition 65 substances	Not contained

Specifications and approvals

UL / CSA	UL 1977 ECBT2.E235076
	CSA-C22.2 No. 182.3 ECBT8.E235076
CE	Yes
Approvals	DNV GL

Commercial data

Packaging size	1
Net weight	656.1 g
Country of origin	Romania
European customs tariff number	85389099
ETIM	EC000437
eCl@ss	27440202 Shell for industrial connectors