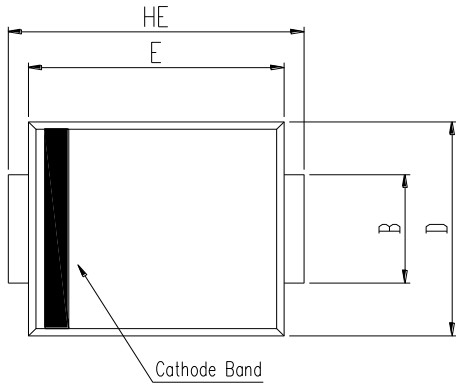


5.0SMCJx Series

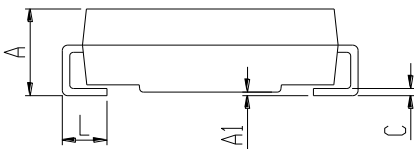
Transient Voltage Suppressors

Peak Pulse Power 5000W Stand-off Voltage 11V to 170V

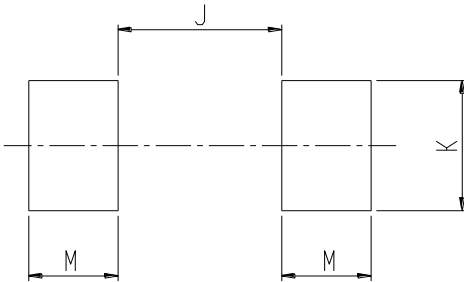
Package Outline Dimensions DO-214AB(SMC)



DIM	SMC (DO-214AB)			
	Millimeters		Inches	
	Min.	Max.	Min.	Max.
A	2.00	2.62	0.079	0.103
A1	0.00	0.20	0.000	0.008
B	2.92	3.07	0.115	0.121
C	0.15	0.31	0.006	0.012
D	5.59	6.22	0.220	0.245
E	6.60	7.11	0.260	0.280
HE	7.75	8.13	0.305	0.320
L	0.76	1.52	0.030	0.060



Recommended Pad Layout



DIM	Recommended Pad Layout (Reference ONLY)			
	Millimeters		Inches	
	Min.	Max.	Min.	Max.
J	-	4.60	-	0.181
K	3.20	-	0.126	-
M	2.00	-	0.079	-